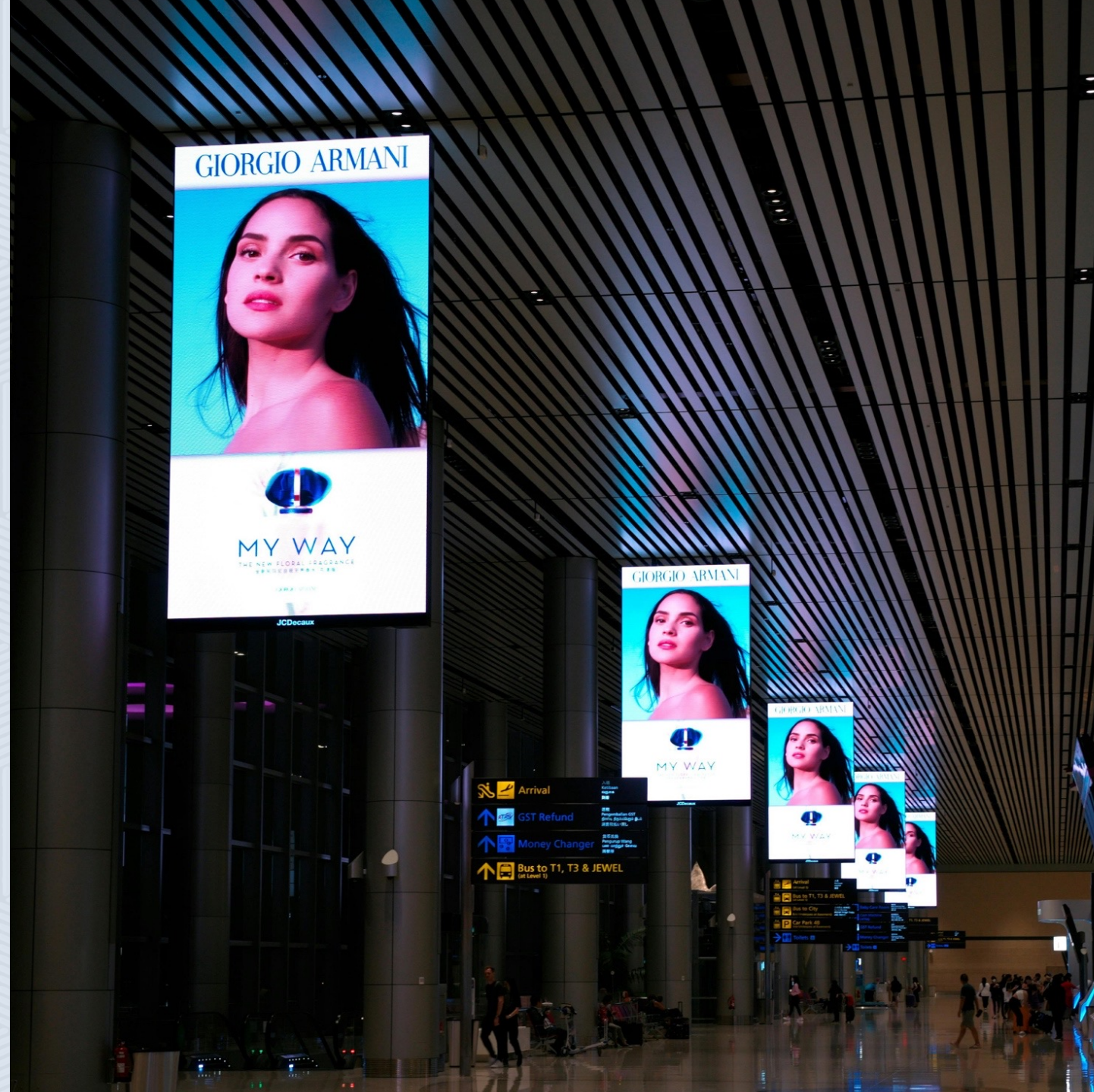




# Where Brands Capture Attention

INTRODUCTION AND OVERVIEW

---





# Visibility. Engagement. Results.

## Vision



To become a leading digital out-of-home (DOOH) network, transforming high-footfall spaces into powerful platforms for brand visibility and engagement.

## Mission



To design, deploy, and manage digital advertising infrastructure that drives visibility for brands and value for location partners.

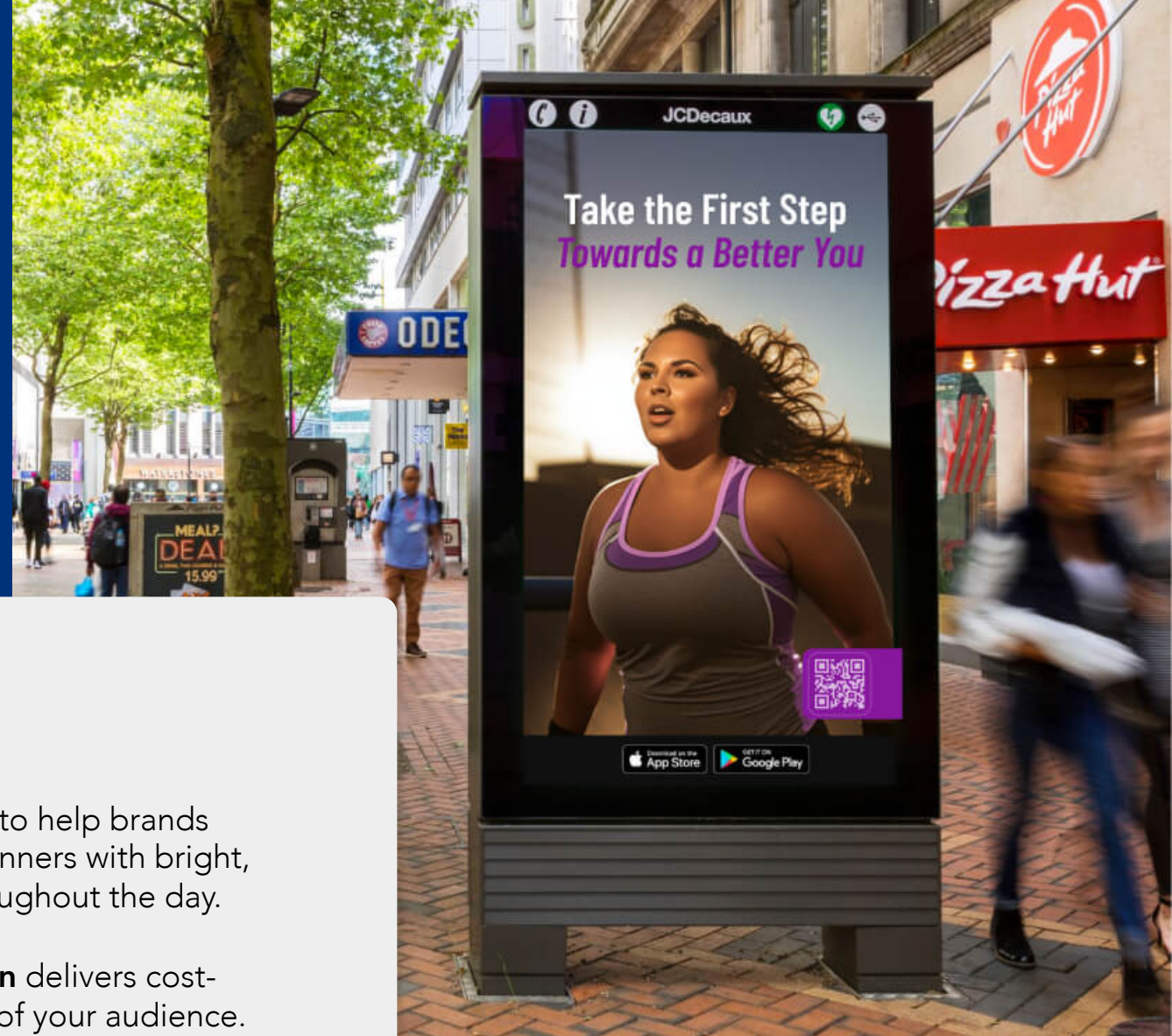
ABOUT US

# Redefining Visibility in High-Footfall Environments



**Vistar Vision** is a digital advertising solution designed to help brands stand out in high-footfall locations. It replaces static banners with bright, high-resolution LED displays that run dynamic ads throughout the day.

From local businesses to premium brands, **Vistar Vision** delivers cost-effective visibility where it matters most – right in front of your audience.



# Why Do Brands Trust Us



Operated by a professional branding company



Transparent ad rotation system



Premium LED quality and reliable playback



Support for creatives and ad scheduling



Prime indoor locations with heavy footfall

# A FRAME STANDEE



LED  
Panel



In-built  
Speaker



Metal  
Body

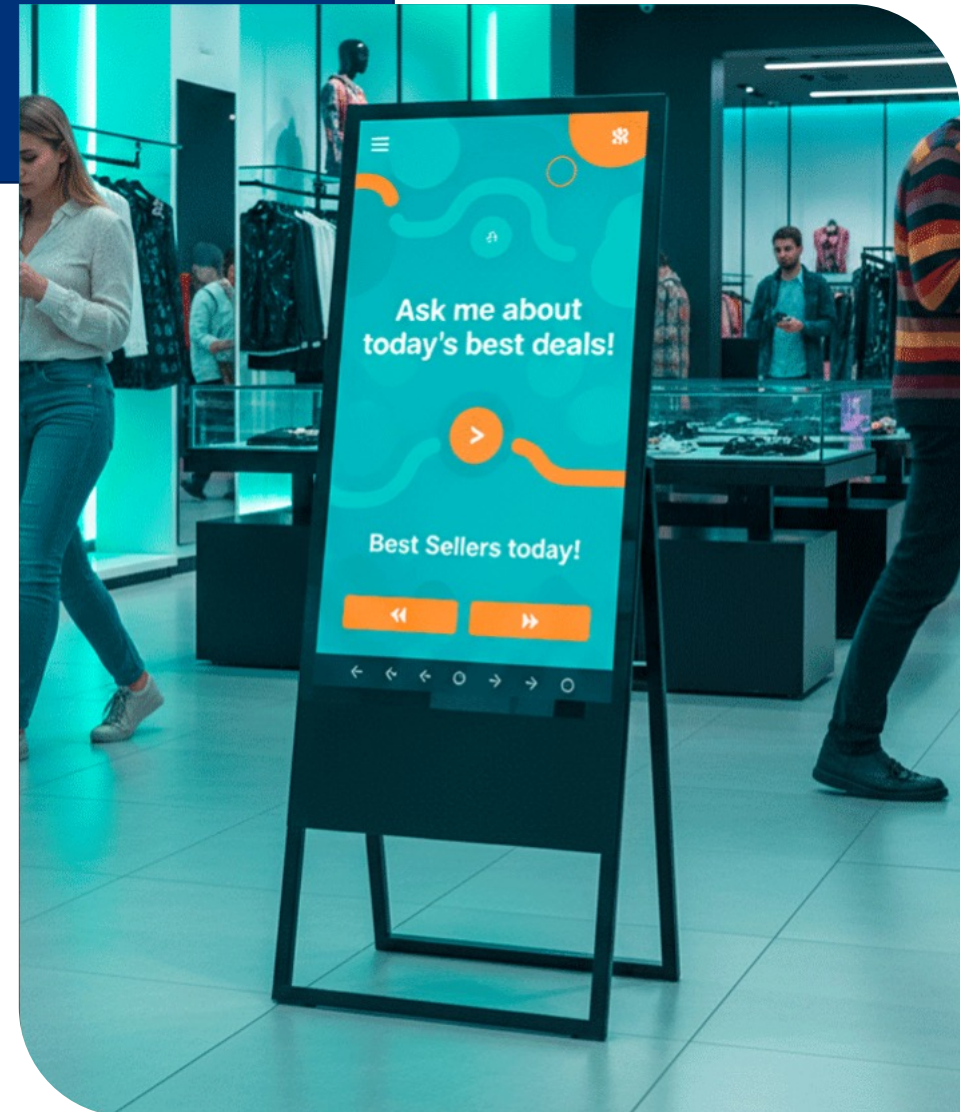


Toughened  
Glass

## Specification

## Details

Panel Size	32" / 43"
Maximum Resolution	1080P FHD / 4K UHD
RAM / ROM	1 GB / 8 GB
Android Version	12.0 / 13.0
Screen Rotation Support	Yes
Cabinet Color	Black / White
Speaker	2 × 10 Watt
CMS Software	Yearly Subscription
Play Store	Yes
Media Play	Online & Offline
Warranty	1 Year Offsite Warranty
Display	Commercial & Non-commercial
Electricity	50 Watt – 150 Watt
Screen Time	12 Hr – 24 Hr
Water-proof	No



# 360° T FRAME STANDEE



LED  
Panel



In-built  
Speaker



Metal  
Body



Toughened  
Glass

## Specification

## Details

Panel Size	32" / 43" / 50" / 55" / 65" / 75"
Maximum Resolution	1080P FHD / 4K UHD
RAM / ROM	1 GB / 8 GB
Embedded OS	12.0 / 13.0
Screen Rotation Support	Yes
Cabinet Color	Black / White
Speaker	2 × 10 Watt
CMS Software	Yearly Subscription
Play Store	Yes
Media Play	Online & Offline
Warranty	1 Year Offsite Warranty
Toughened Glass	With Glass & Without
Display	Commercial & Non-commercial
Electricity	50 Watt – 150 Watt
Screen Time	12 Hr – 24 Hr
Water-proof	No



# POLE STANDEE



LED  
Panel



In-built  
Speaker



Metal  
Body

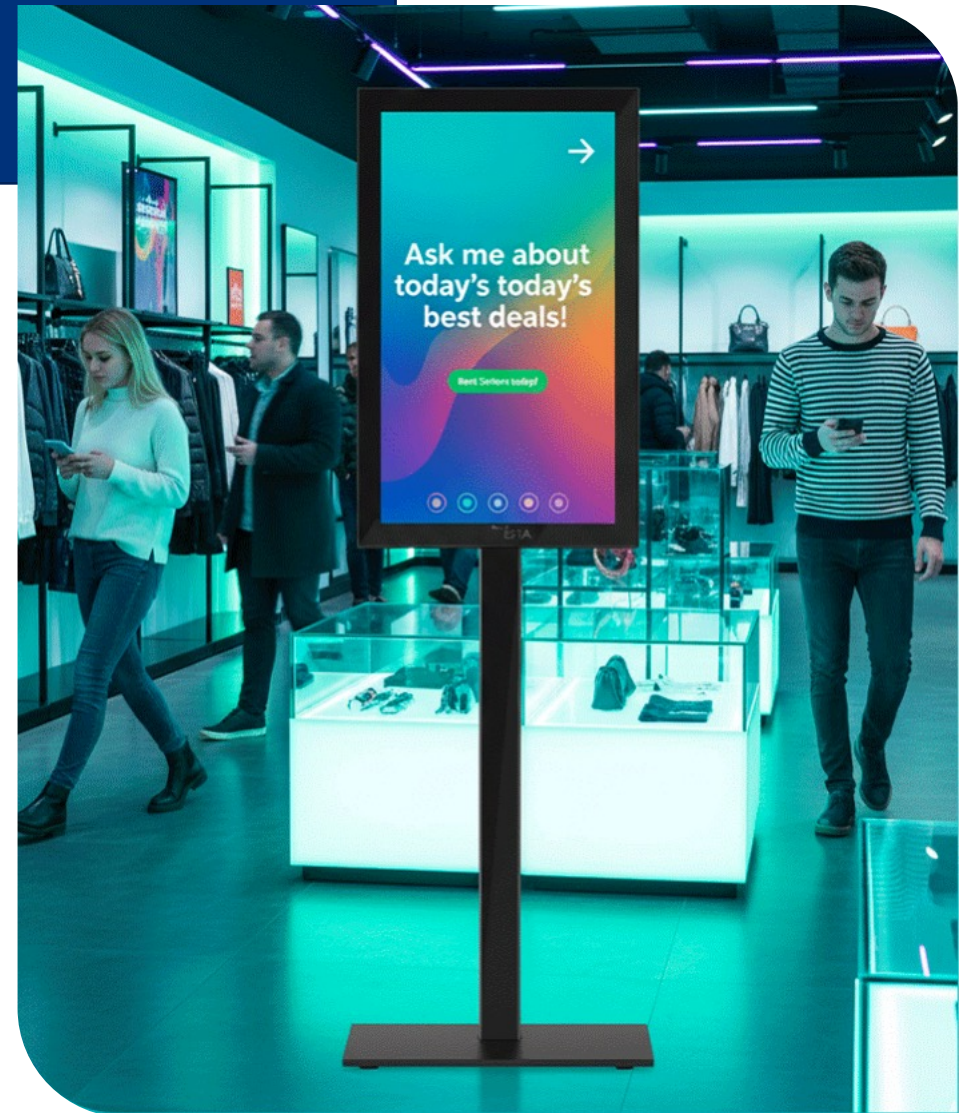


Toughened  
Glass

## Specification

## Details

Panel Size	32" / 43"
Maximum Resolution	1080P FHD / 4K UHD
RAM / ROM	1 GB / 8 GB
Android Version	12.0 / 13.0
Screen Rotation Support	Yes
Cabinet Color	Black / White
Speaker	2 × 10 Watt
CMS Software	Yearly Subscription
Play Store	Yes
Media Play	Online & Offline
Warranty	1 Year Offsite Warranty
Display	Commercial & Non-commercial
Electricity	50 Watt – 150 Watt
Screen Time	12 Hr – 24 Hr
Water-proof	No



# TABLE TOP STANDEE



LED  
Panel



In-built  
Speaker



Metal  
Body

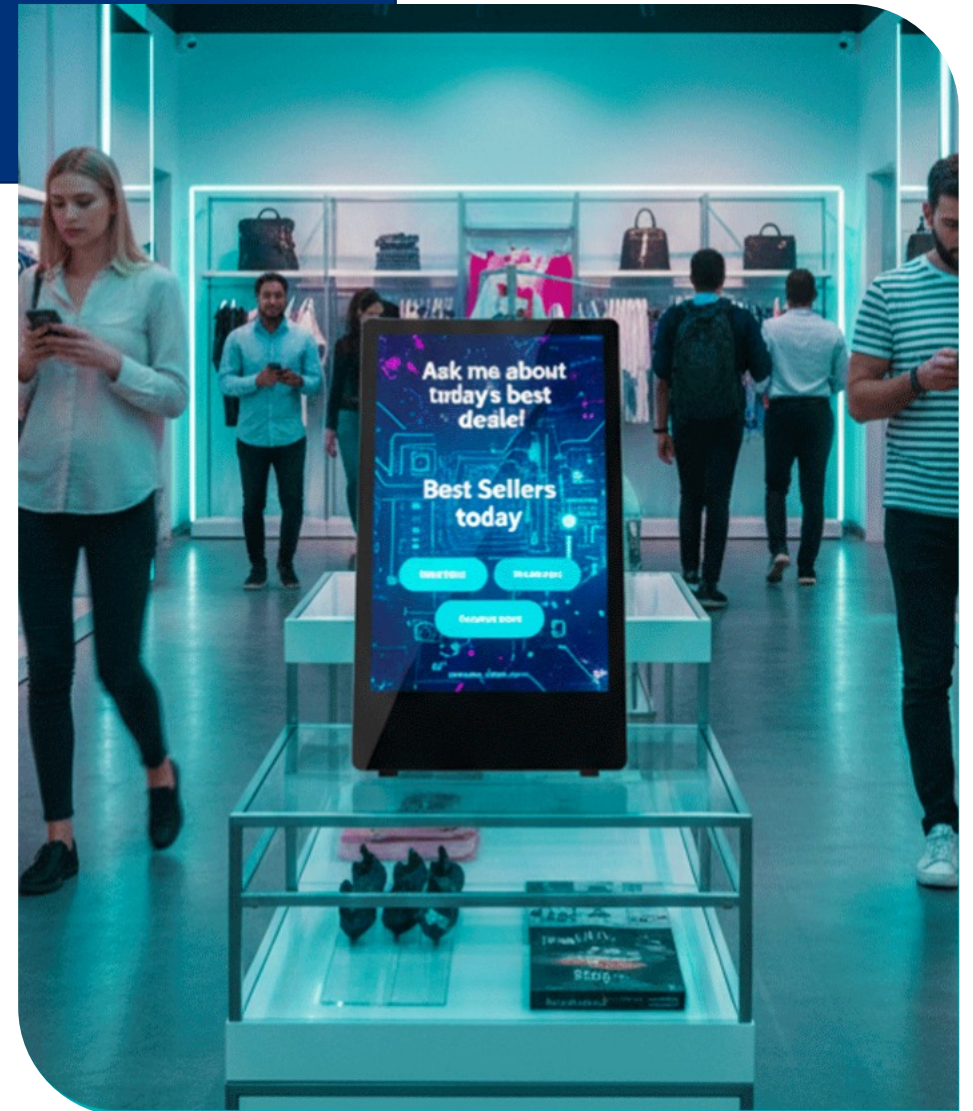


Toughened  
Glass

## Specification

## Details

Panel Size	10.1" / 24"
Maximum Resolution	1080P FHD / 4K UHD
RAM / ROM	1 GB / 8 GB
Embedded OS	12.0 / 13.0
Screen Rotation Support	Yes
Cabinet Color	Black / White
Speaker	2 × 10 Watt
CMS Software	Yearly Subscription
Play Store	Yes
Media Play	Online & Offline
Warranty	1 Year Offsite Warranty
Display	Commercial & Non-commercial
Electricity	50 Watt – 150 Watt
Screen Time	12 Hr – 24 Hr
Water-proof	No



# WALL MOUNT STANDEE



LED  
Panel



In-built  
Speaker



Metal  
Body



Toughened  
Glass

## Specification

## Details

Panel Size	24" / 32" / 43"
Maximum Resolution	1080P FHD / 4K UHD
RAM / ROM	1 GB / 8 GB
Embedded OS	12.0 / 13.0
Screen Rotation Support	Yes
Cabinet Color	Black / White
Speaker	2 × 10 Watt
CMS Software	Yearly Subscription
Play Store	Yes
Media Play	Online & Offline
Warranty	1 Year Offsite Warranty
Display	Commercial & Non-commercial
Electricity	50 Watt – 150 Watt
Screen Time	12 Hr – 24 Hr
Water-proof	No



# MENU BOARD LED DISPLAY



LED  
Panel



In-built  
Speaker



Metal  
Body



Toughened  
Glass

## Specification

## Details

Panel Size	24" / 32" / 43" / 50" / 55"
Maximum Resolution	1080P FHD / 4K UHD
RAM / ROM	1 GB / 8 GB
Embedded OS	Latest
Screen Rotation Support	Yes
Speaker	Yes
CMS Software	Yearly Subscription
Play Store	Yes
Media Play	Online & Offline
Warranty	1 Year Offsite Warranty
Display	Commercial & Non-commercial
Electricity	50 Watt – 150 Watt
Screen Time	12 Hr – 24 Hr
Water-proof	No



# CHARGING LED STANDEE



LED  
Panel



In-built  
Speaker



Metal  
Body



Toughened  
Glass

## Specification

## Details

Panel Size	32" / 43"
Maximum Resolution	1080P FHD / 4K UHD
RAM / ROM	1 GB / 8 GB
Embedded OS	Latest
Screen Rotation Support	Yes
Speaker	With & Without
CMS Software	Yearly Subscription
Split Screen	Yes
Media Play	Online & Offline
Warranty	1 Year Offsite Warranty
Display	Commercial & Non-commercial
Electricity	60 Watt – 170 Watt
Screen Time	12 Hr – 24 Hr
Charging Ports	6/8



# MAGEZINE LED STANDEE



LED  
Panel



In-built  
Speaker



Metal  
Body



Toughened  
Glass

## Specification

## Details

Panel Size	24" / 32"
Maximum Resolution	1080P FHD / 4K UHD
RAM / ROM	1 GB / 8 GB
Embedded OS	Latest
Screen Rotation Support	Yes
Speaker	With & Without
CMS Software	Yearly Subscription
Split Screen	Yes
Media Play	Online & Offline
Warranty	1 Year Offsite Warranty
Display	Commercial & Non-commercial
Electricity	50 Watt – 150 Watt
Screen Time	12 Hr – 24 Hr
Water-proof	No



# PODIUM STANDEE LED DISPLAY



LED  
Panel



In-built  
Speaker



Metal  
Body



Toughened  
Glass

## Specification

## Details

Panel Size	32" / 43"
Display	LED Panel
Maximum Resolution	1080P FHD / 4K UHD
Height	4 Feet
Speaker	Yes
RAM	1 GB
Storage	8 GB
Frame	MS Iron
USB Ports	2
Toughened Glass	5 mm



# DIGITAL WALKING BACKPACK



LED  
Panel



In-built  
Speaker

## Specification

## Details

Panel Size	15" / 21" / 24" / 32"
Maximum Resolution	1080P FHD / 4K UHD
RAM / ROM	512 MB – up to 2 GB / 4 GB – up to 16 GB
Embedded OS	Latest
Screen Rotation Support	Yes
Speaker	With & Without
Split Screen	Yes
Media Play	Online & Offline
Warranty	1 Year Offsite Warranty
Display	Commercial & Non-commercial
Power Source	12V, 6Ah Lithium Battery
Screen Time	5 Hr – 8 Hr
Water-proof	No



# LED TV DISPLAY



LED  
Panel



In-built  
Speaker

## Specification

## Details

Panel Size	24" / 32" / 43" / 50" / 55" / 65"
Maximum Resolution	1080P FHD / 4K UHD
RAM / ROM	1 GB / 8 GB
Embedded OS	Latest
Screen Rotation Support	Yes
Speaker	With & Without
CMS Software	Yearly Subscription
Split Screen	Yes
Media Play	Online & Offline
Warranty	1 Year Offsite Warranty
Display	Commercial & Non-commercial
Electricity	50 Watt – 150 Watt
Screen Time	12 Hr – 24 Hr
Water-proof	No



# LED WALL EXTERIOR & INTERIOR



LED  
Panel

## Specification

## Details

Panel	P2, P2.5, P3, P4, P5
Maximum Resolution	1080P FHD / 4K UHD
Embedded OS	Latest
CMS Software	Free
Split Screen	Yes
Media Play	Online & Offline
Warranty	1 Year On-site Warranty
Electricity	Depends on the Size
Screen Time	12 Hr – 24 Hr
Water-proof	Yes



“  
Secure.  
Visible.  
Connected.”

+91 982 926 7444

+91 992 812 0036

[info@visarodigital.com](mailto:info@visarodigital.com)

[www.visarodigital.com](http://www.visarodigital.com)

